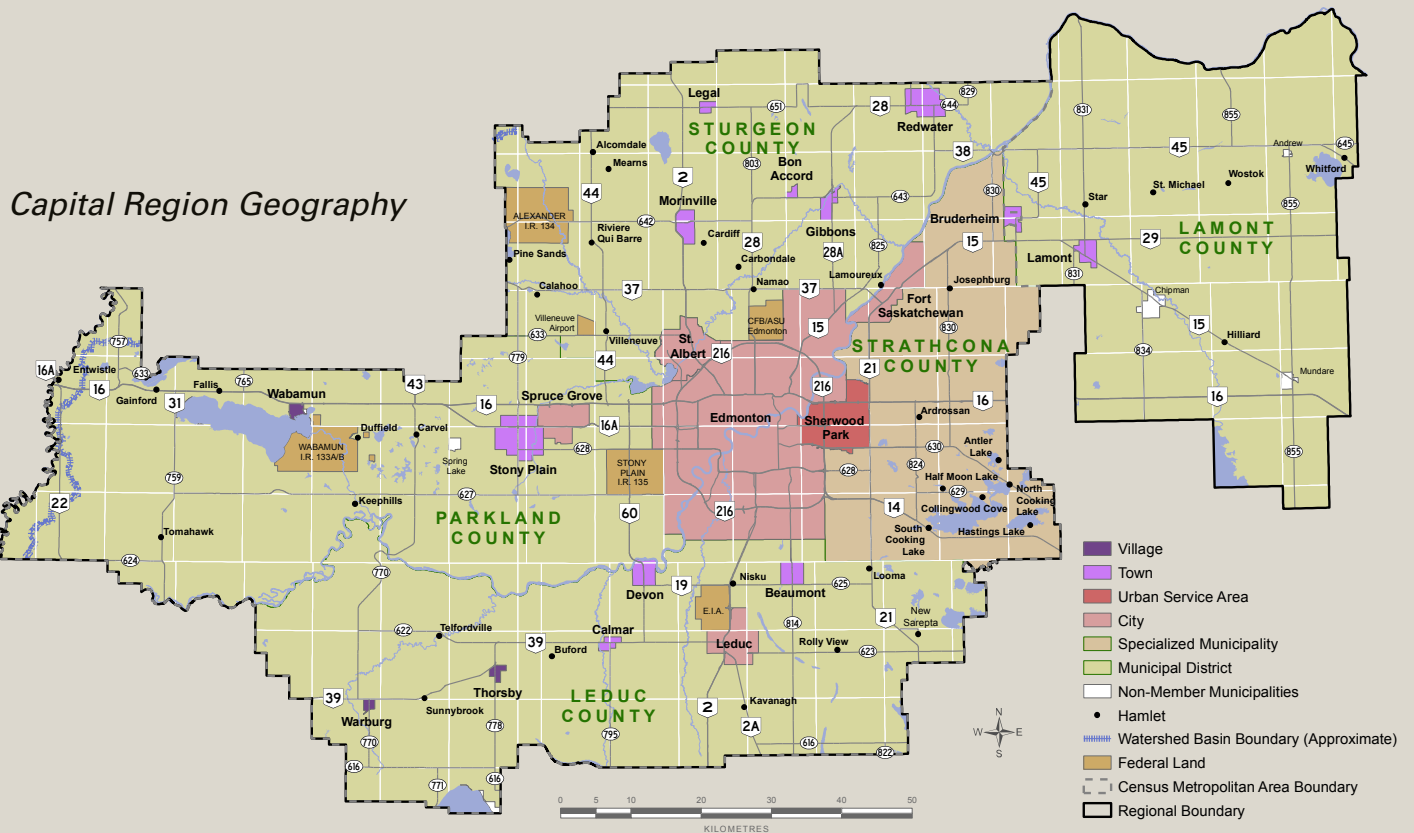


Geographic Profile

HIGHLIGHTS:

The map below, *Capital Region Geography*, illustrates the area and municipalities of the Capital Region



- The Capital Region Board (CRB) consists of 24 member municipalities in Alberta's Capital Region, including:
 - five cities (Edmonton, Fort Saskatchewan, Leduc, St. Albert and Spruce Grove);
 - one specialized municipality (Strathcona County);
 - four municipal districts (Lamont County, Leduc County, Parkland County and Sturgeon County);
 - 11 towns (Beaumont, Bon Accord, Bruderheim, Calmar, Devon, Gibbons, Lamont, Legal, Morinville, Redwater and Stony Plain); and,
 - three villages (Thorsby, Wabamun and Warburg).
- The CRB's one specialized municipality and four municipal districts include a total of 39 communities that are recognized as hamlets by Alberta Municipal Affairs. The largest of these hamlets is the Urban Service Area of Sherwood Park in Strathcona County.

Fact Sheet: Geographic Profile

- 22 of the 35 municipalities within the Edmonton Census Metropolitan Area (CMA), as defined by Statistics Canada, are members of the CRB.
- Municipalities in the Edmonton CMA that are not members of the CRB include four Indian reserves, eight summer villages and the Village of Spring Lake.
- Lamont County and the Town of Lamont are the two CRB member municipalities located outside the Edmonton CMA.
- Three urban municipalities surrounded by Lamont County are not members of the CRB: the Village of Andrew, the Village of Chipman and the Town of Mundare.
- The Village of New Sarepta was one of the 25 original members of the CRB. It dissolved to hamlet status under the jurisdiction of Leduc County on September 1, 2010.
- The CRB member municipalities occupy a total of 12,384 km² of land.
- The CRB spans approximately 185 km of land from Lamont County's eastern boundary to Parkland County's western boundary.
- The CRB spans approximately 102 km of land from Sturgeon County's northern boundary to Leduc County's southern boundary.
- The majority of lands within the CRB are in the North Saskatchewan River watershed basin.
- The CRB, in its entirety, is located within the North Saskatchewan Region under the Land-use Framework and is considered a sub-regional metropolitan area within the North Saskatchewan Region.
- The Capital Region is the northern anchor of Alberta's Calgary-Edmonton Corridor and one of the fastest growing economic regions in Canada.

The Growth Plan and its Addenda are available through the Capital Region Board and its website www.capitalregionboard.ab.ca

ADDITIONAL INFORMATION

Capital Region Board

Web: www.capitalregionboard.ab.ca

Phone: (780) 638-6000

Email: info@capitalregionboard.ab.ca

DISCLAIMER: This Planning Toolkit is a guide to aid understanding of the Land Use Principles and Policies of the Capital Region Growth Plan. It is not a substitute for reading and understanding the Growth Plan. For certainty, the reader is advised to refer to the Growth Plan and related legislation available through the Capital Region Board.